

RISTRUTTURAZIONE E POTENZIAMENTO - LOTTO A
RIFACIMENTO SPOGLIATOI E SERVIZI GENERALI

ESECUTIVI STRUTTURALI

BIELLA, Luglio 2017

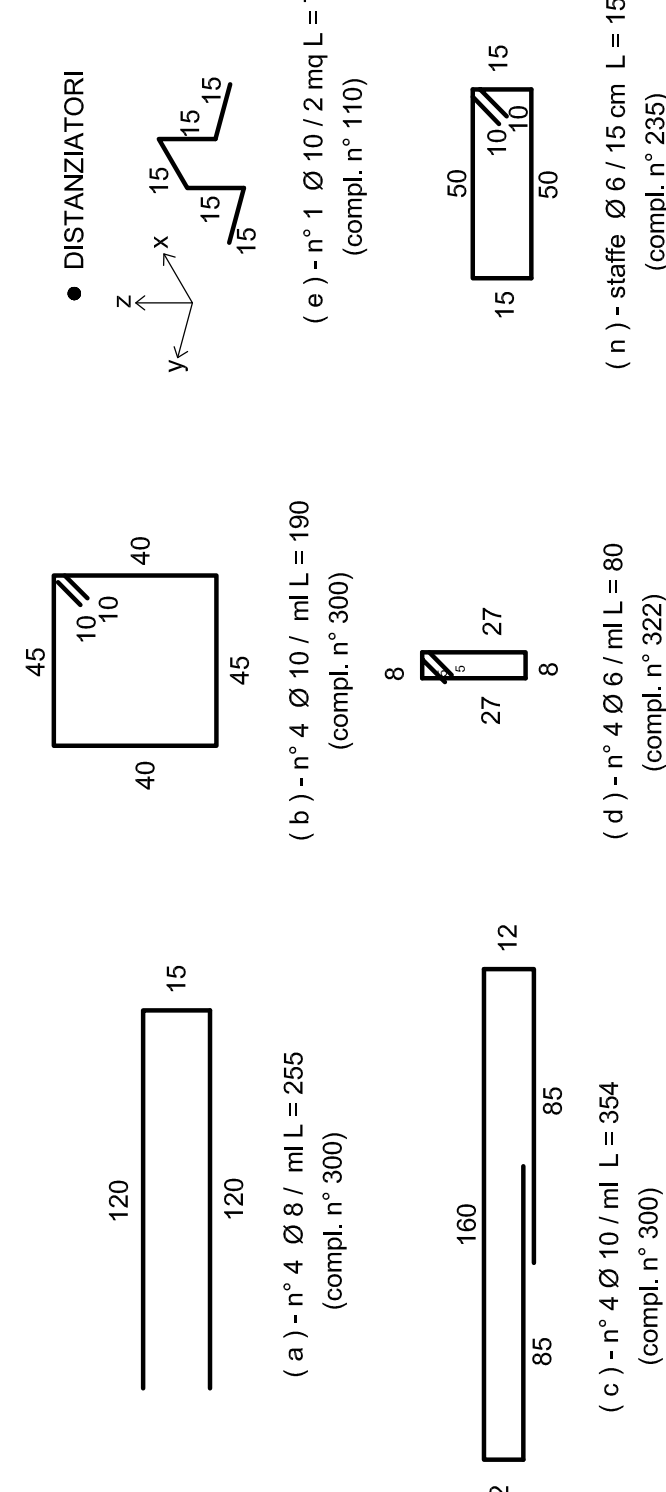
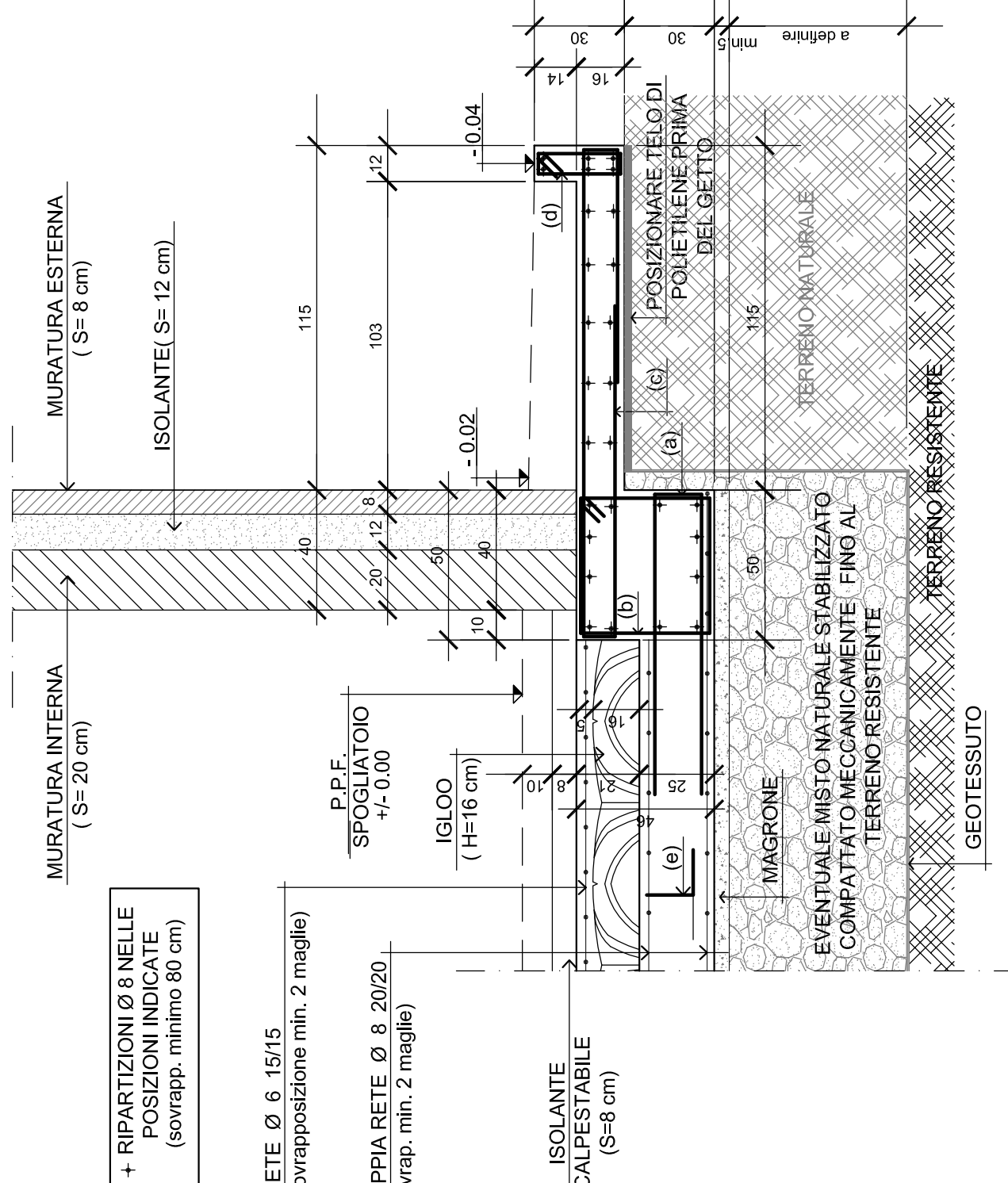
DOTT. ING. GARIBOLDI RENE GIORGIO
VIA DELLE ROSE N° 19 - BIELLA

TAVOLA 1

PIANTA PIASTRA DI FONDAZIONE, SEZIONI
E PARTICOLARI

SEZIONE A -

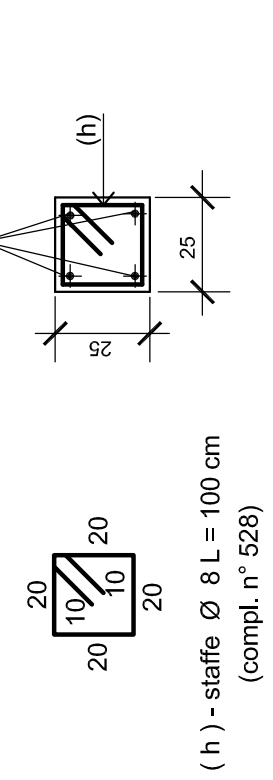
RAPP. 1/20



(a) - n° 4 Ø 8 / m L = 255 (compil. n° 300)
(b) - n° 1 Ø 10 / 2 m L = 180 (compil. n° 110)
(c) - n° 4 Ø 10 / m L = 354 (compil. n° 300)
(d) - n° 4 Ø 6 / 15 cm L = 80 (compil. n° 322)
(e) - n° 1 Ø 10 / 2 m L = 75 (compil. n° 110)
(f) - staffe Ø 6 / 15 cm L = 150 (compil. n° 235)

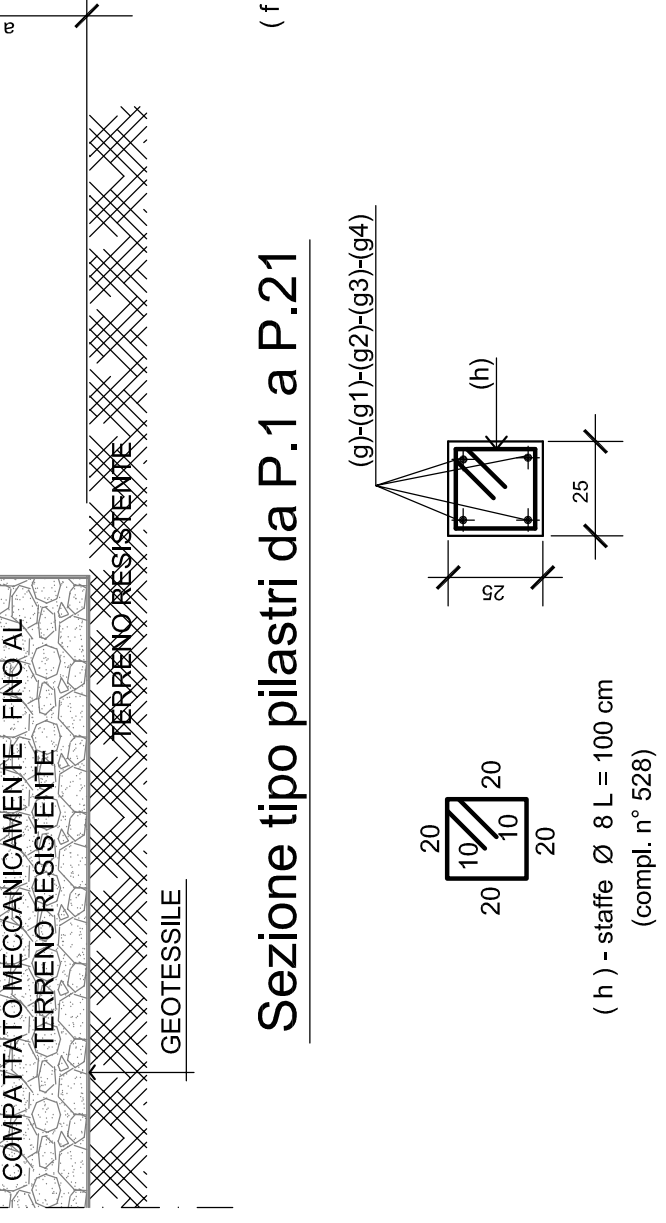
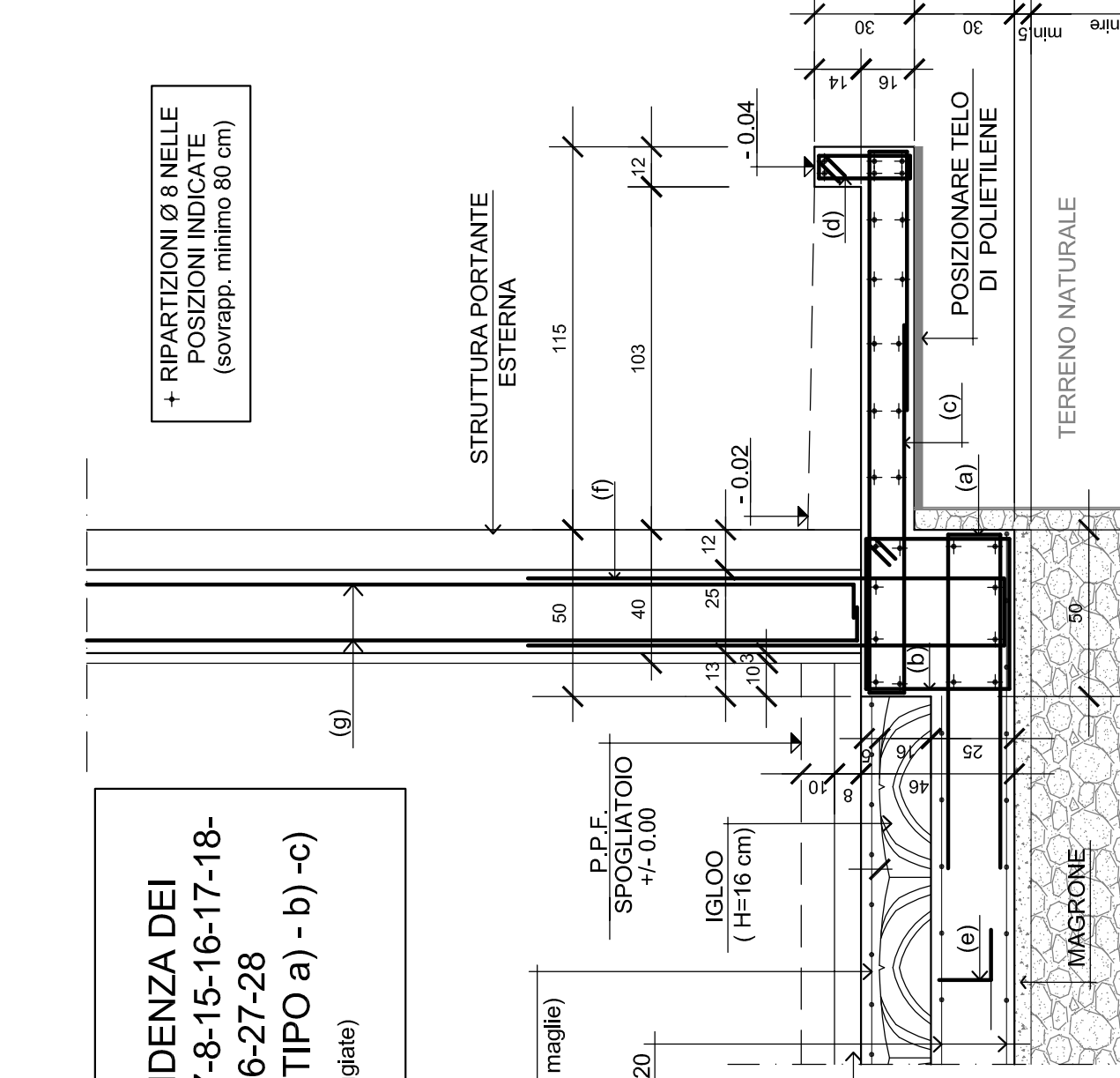
Sezione tipo pilastri da P.1 a P.21

(1) - n° 2 tirasse Ø 16 / pal. L = 320 cm (compil. n° 42)



SEZIONE A1 -

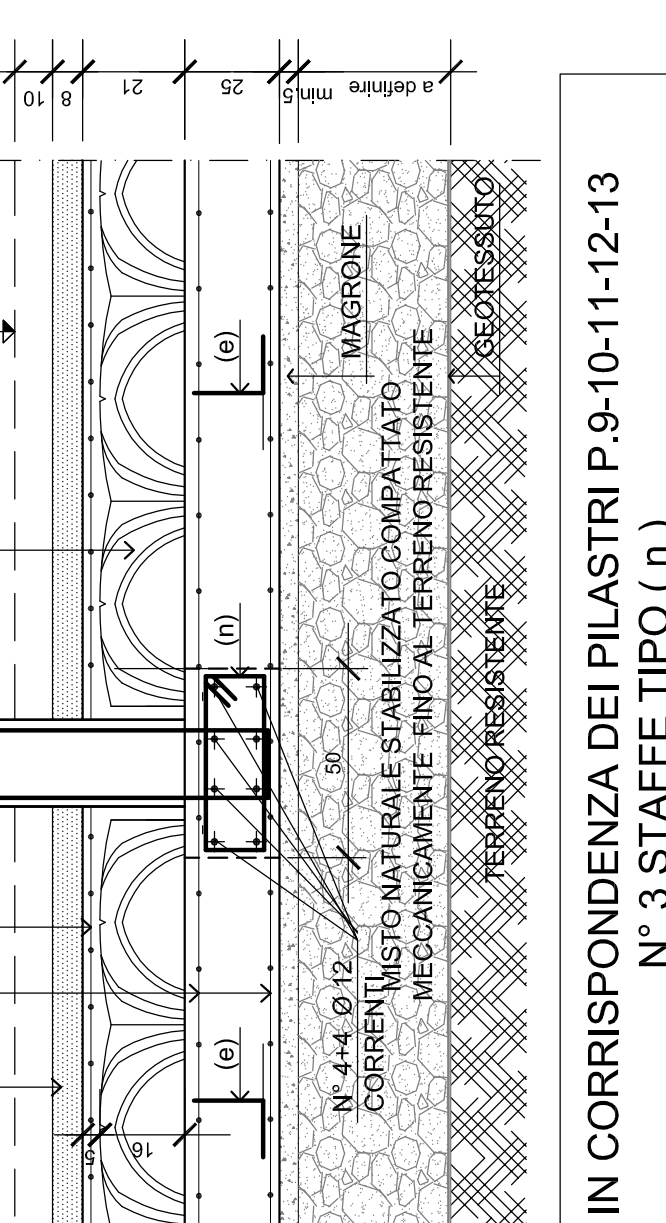
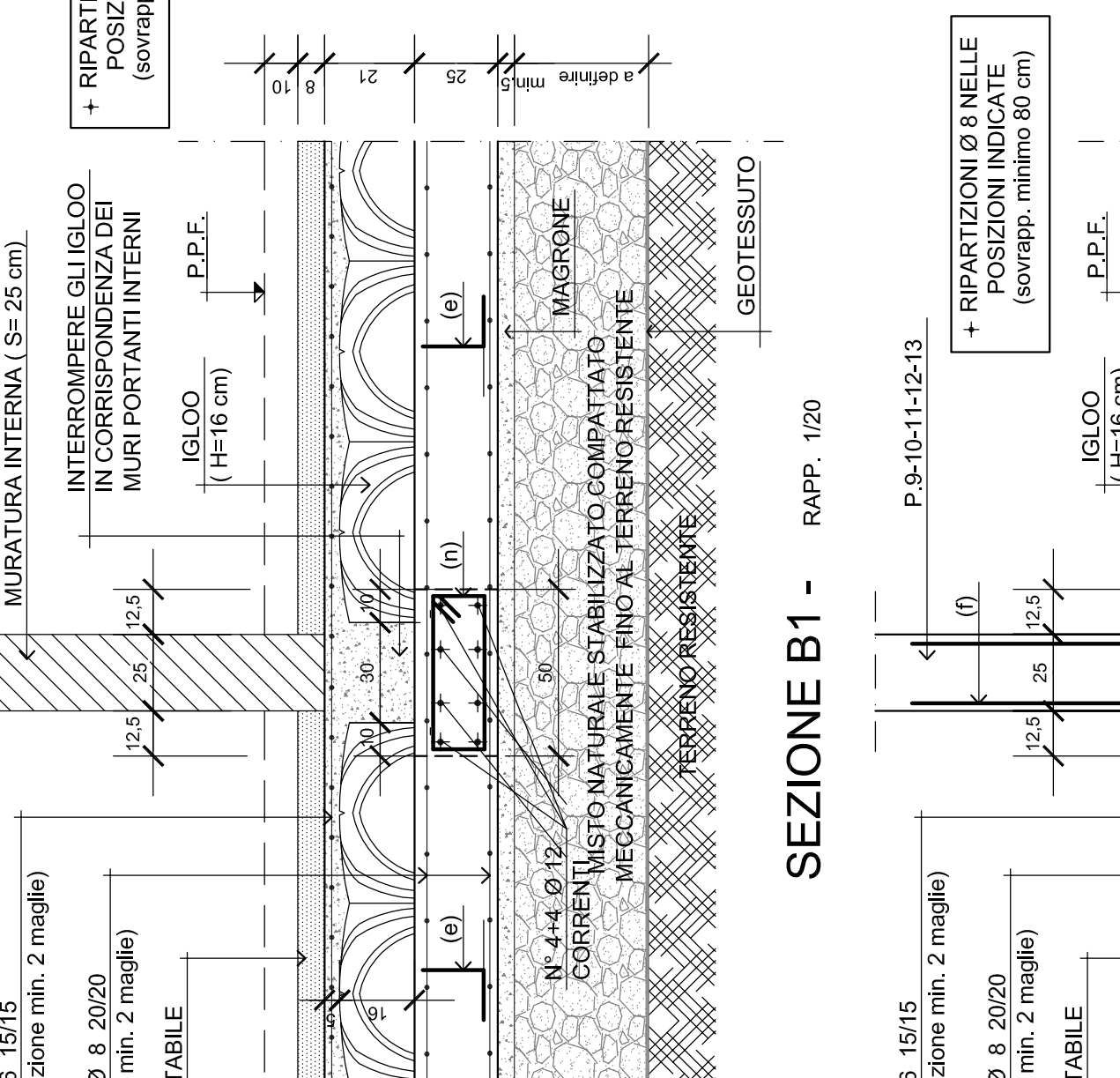
RAPP. 1/20



(1) - n° 2 tirasse Ø 16 / pal. L = 320 cm (compil. n° 42)

SEZIONE B -

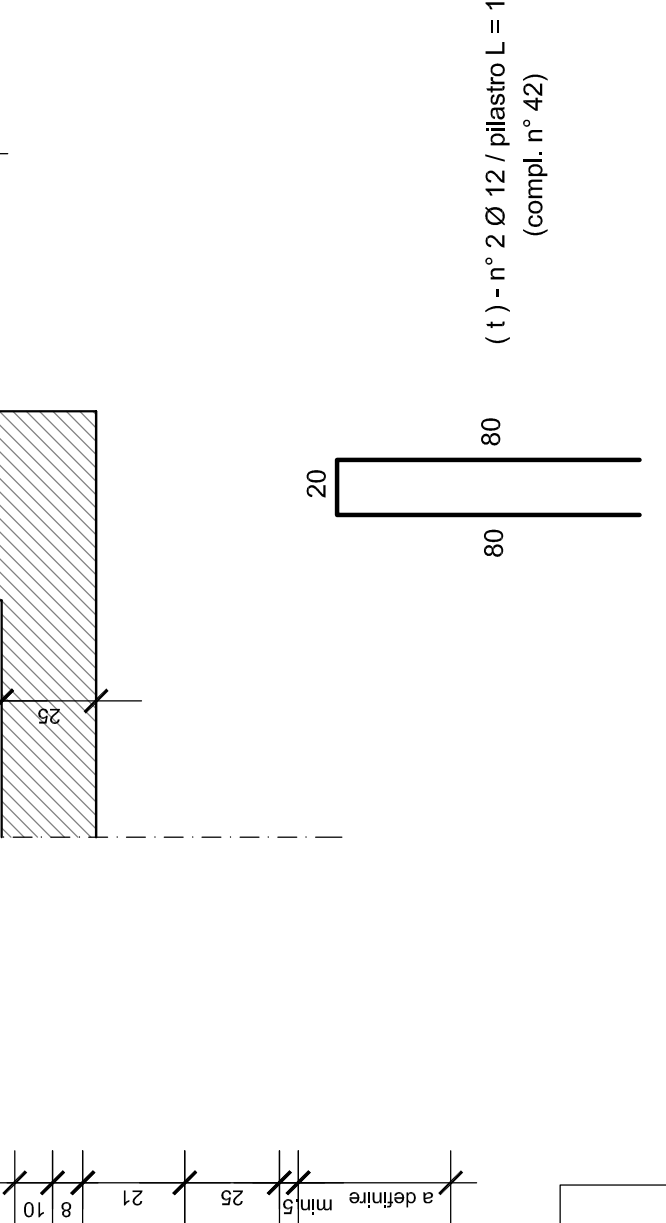
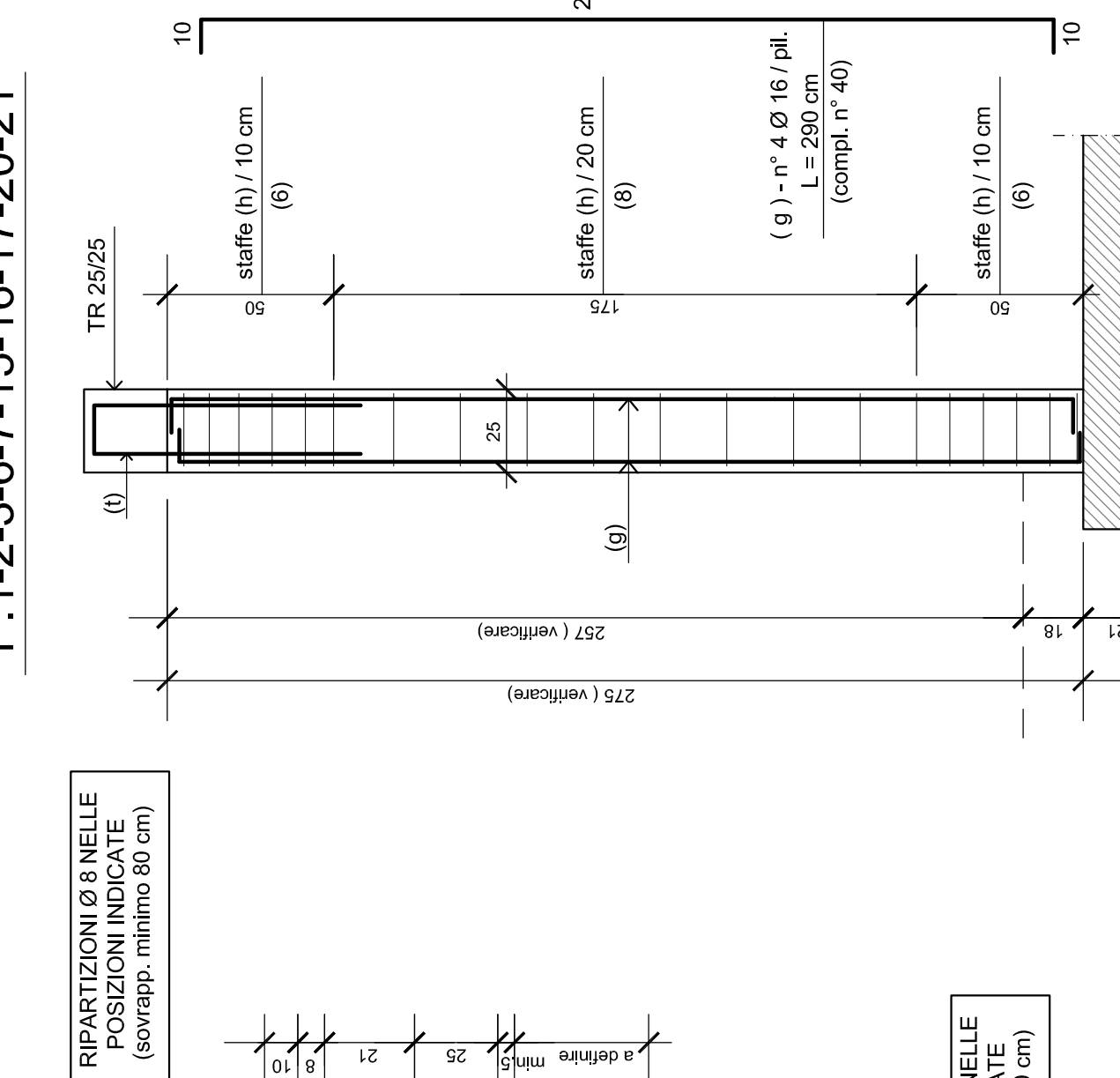
RAPP. 1/20



N.B.: IN CORRISPONDENZA DEI PILASTRI P.9-10-11-12-13
N° 3 STAFFE TIPO (n)

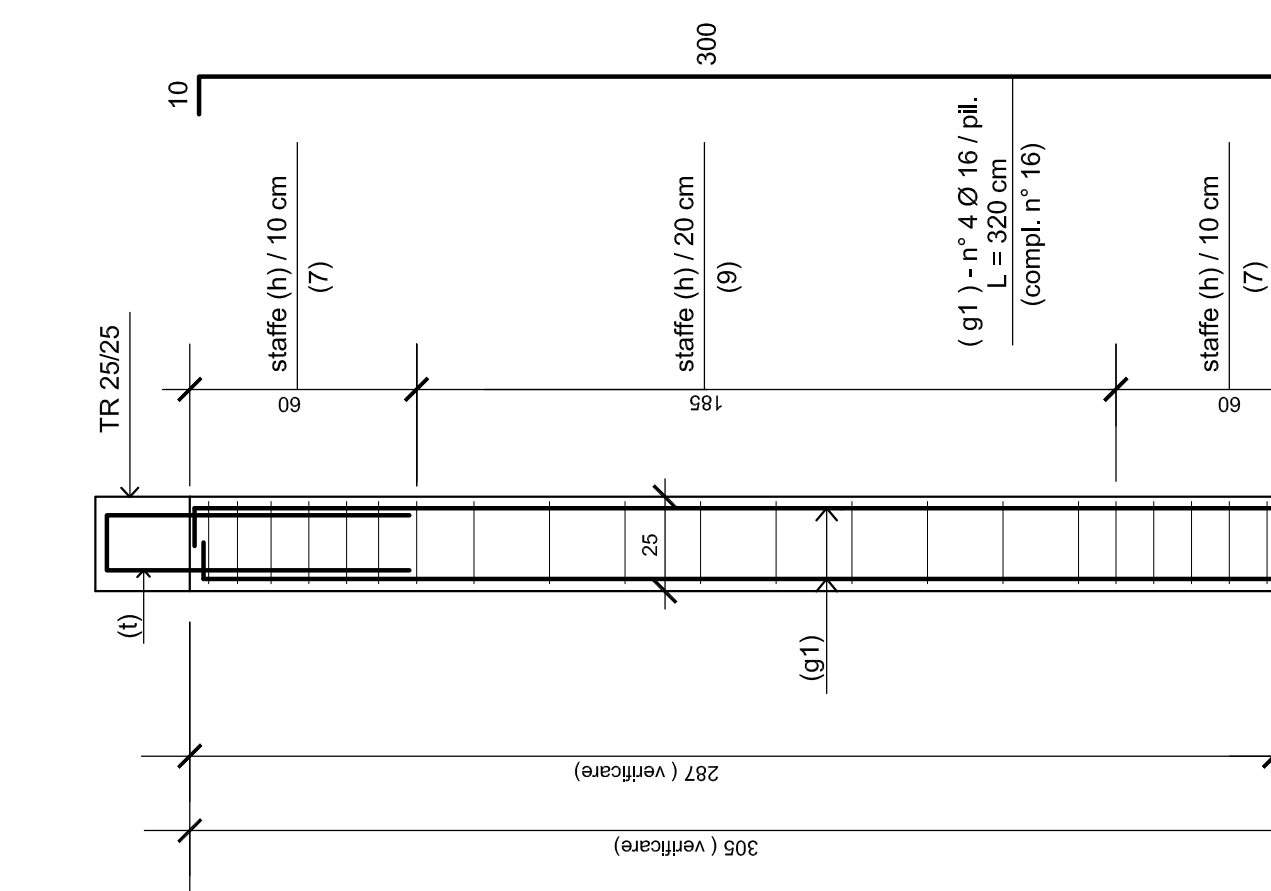
SEZIONE B1 -

RAPP. 1/20

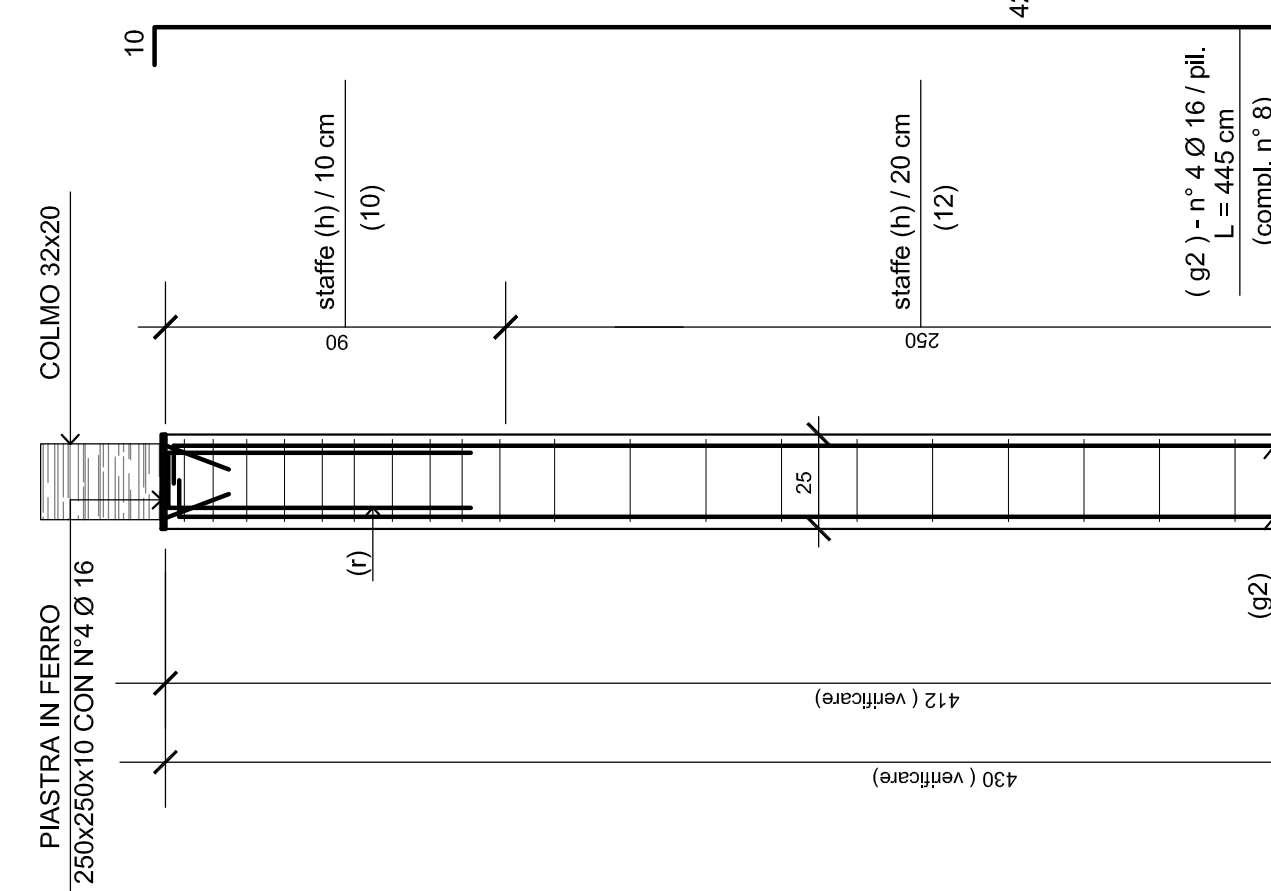


(1) - n° 2 Ø 12 / pilastro L = 180 (compil. n° 42)

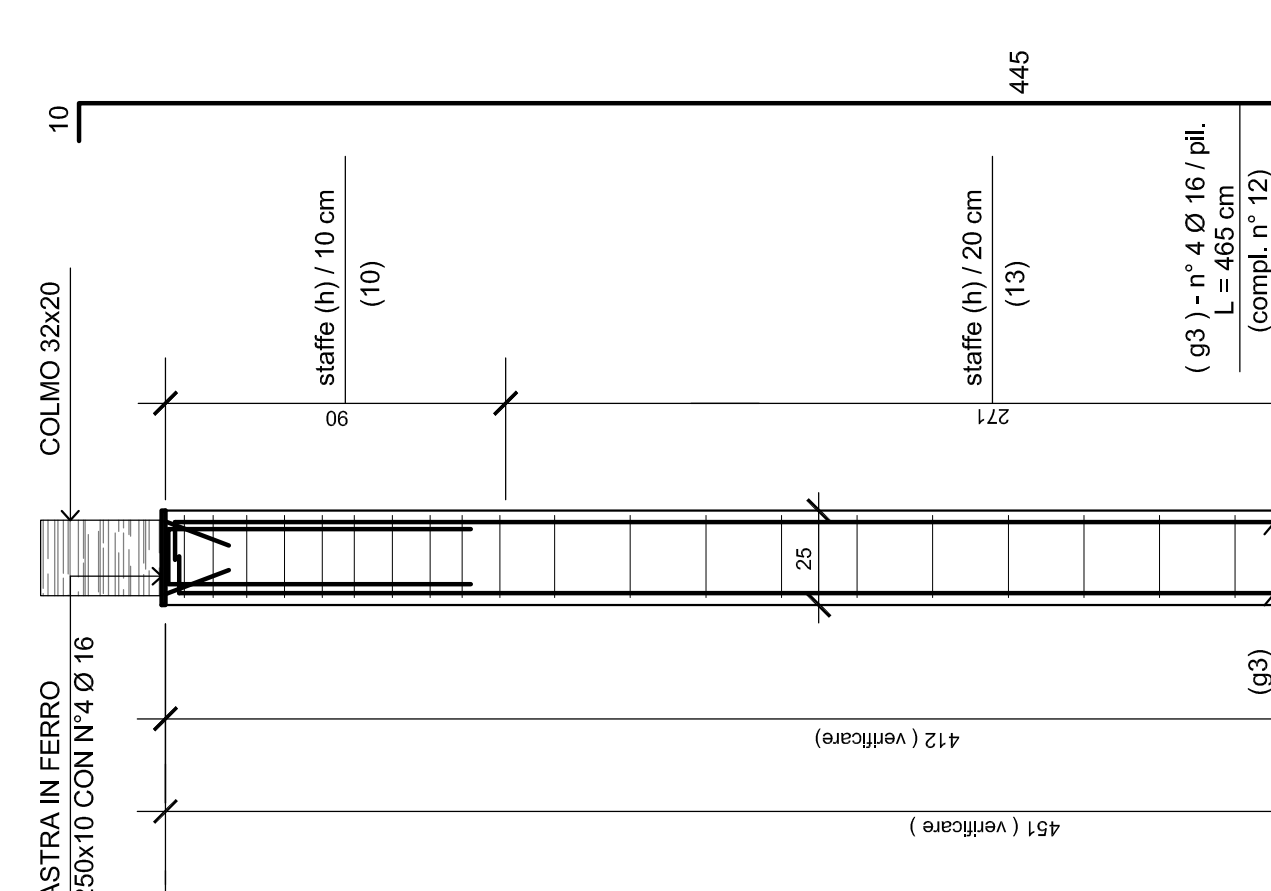
Passo staffe per P.4-5-18-19



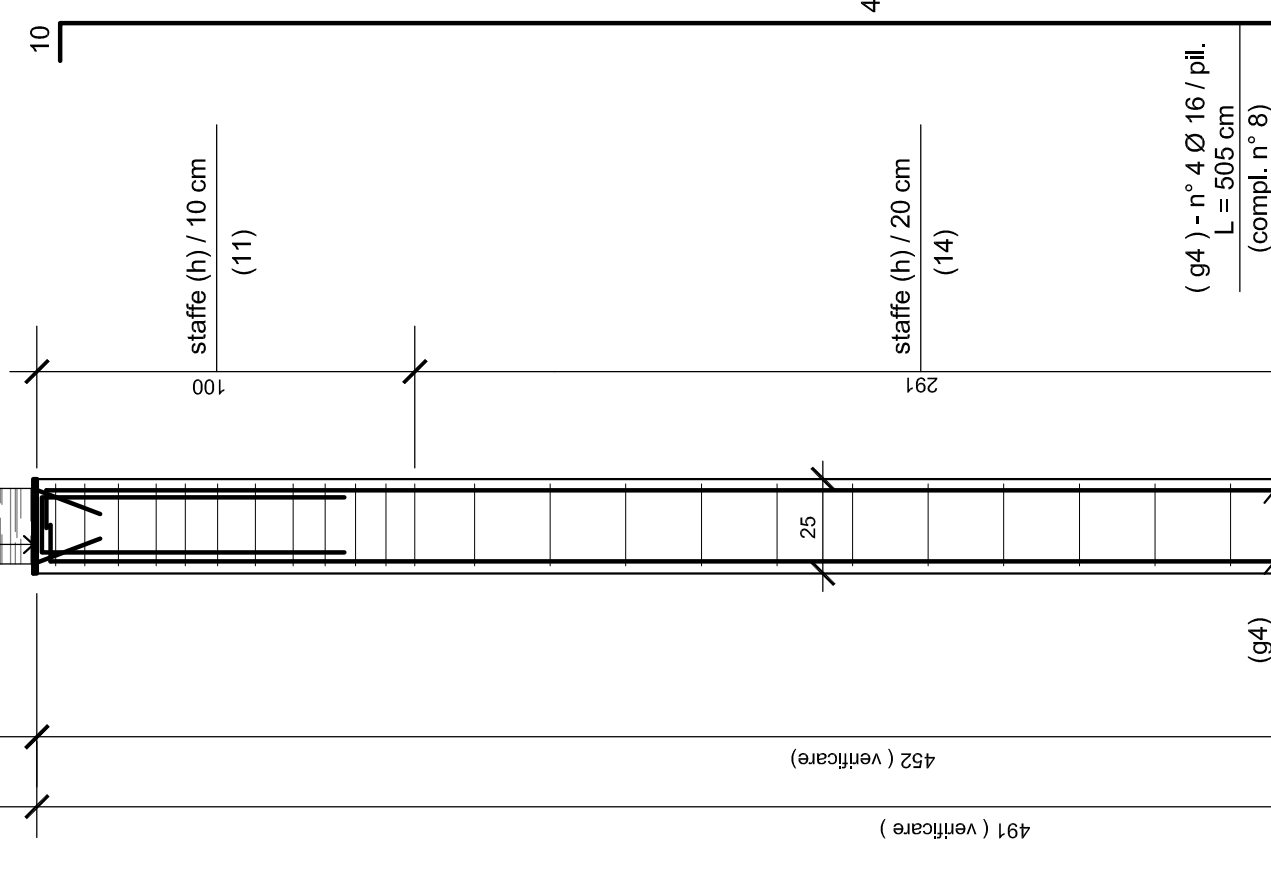
Passo staffe per P. 8-14



Passo staffe per P. 9-10-13

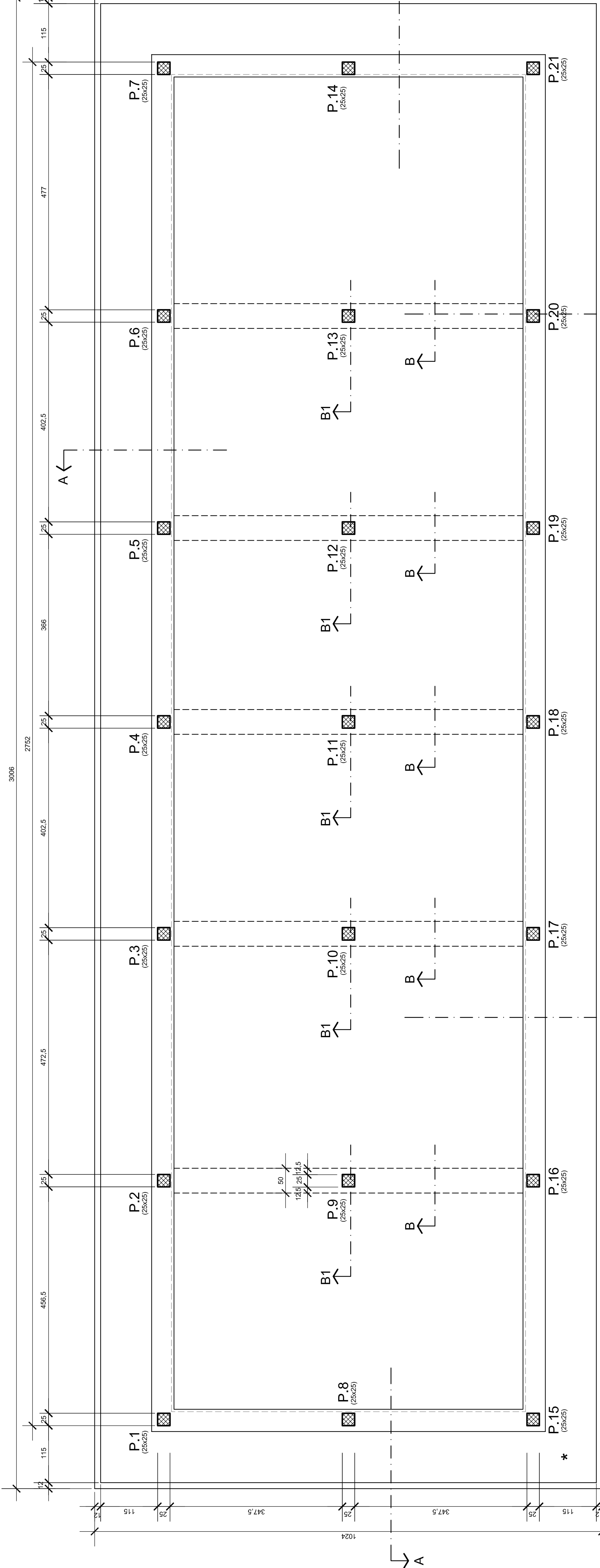


Passo staffe per P.11-12



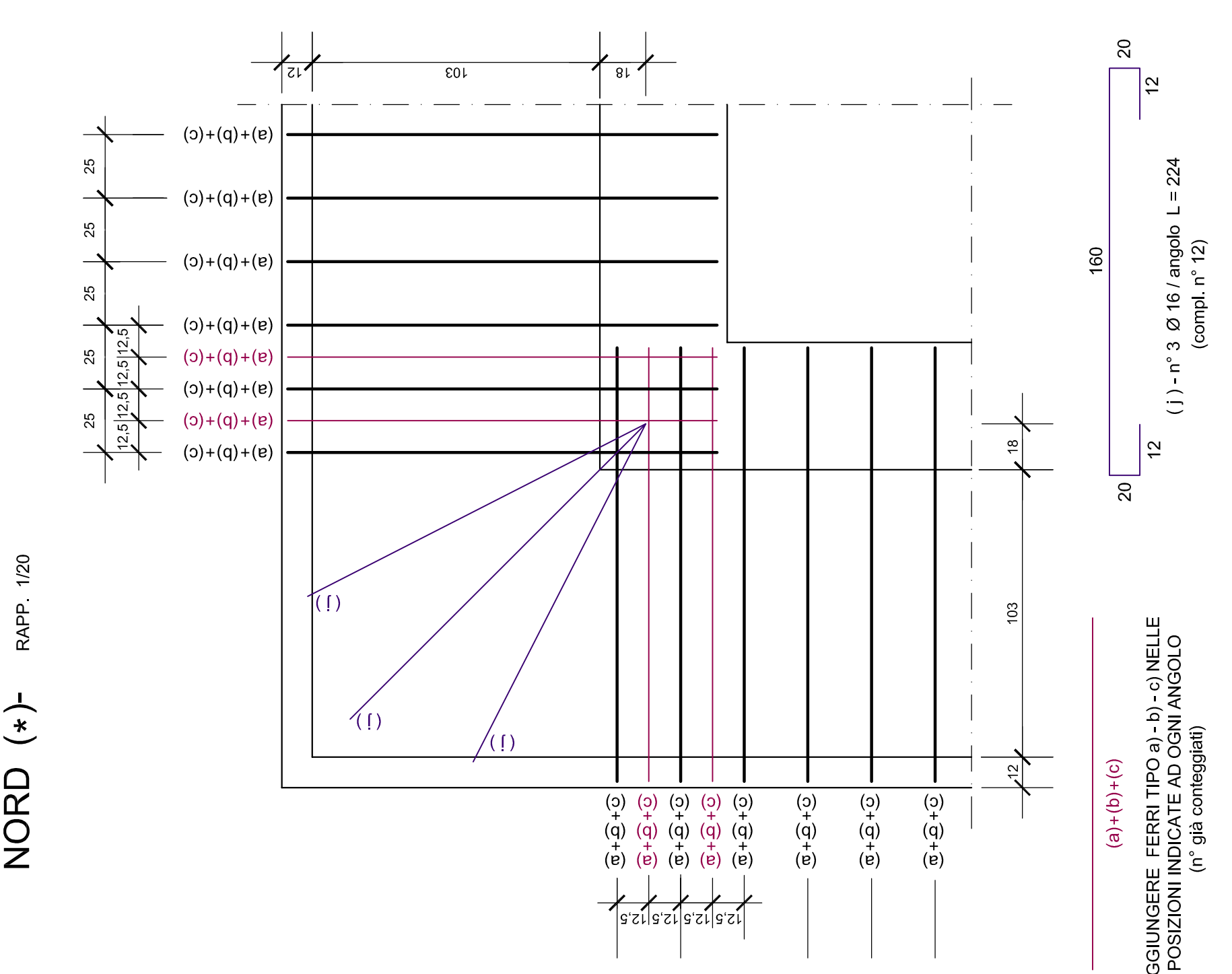
PIANTA PIASTRA DI FONDAZIONE -

RAPP. 1/50



ARMATURA AGGIUNTIVA ANGOLI MARCIAPIEDE VERSO
NORD (+)-

RAPP. 1/20



PRESCRIZIONI PER LA DETERMINAZIONE DEL PIANO DI APPOGGIO DELLE FONDAZIONI
1) IL PIANO DI FONDAZIONE PUO' ESSERE OTTENUTO BONIFICANDO IL TERRENO COSTITUENTE
IL SITO CON L'AUSILIO DI MISTO NATURALE D'ALVEO COMPATTATO CON RULLI IDONEI.
2) IL TERRENO VEGETALE DEVE ESSERE RIMOSSO INTEGRALMENTE.

MATERIALI DA IMPIEGARE :
calcestruzzo C 25/30
C.E. x c2 - cons. S4
acciaio per c.a. B450C

(compil. n° 6)